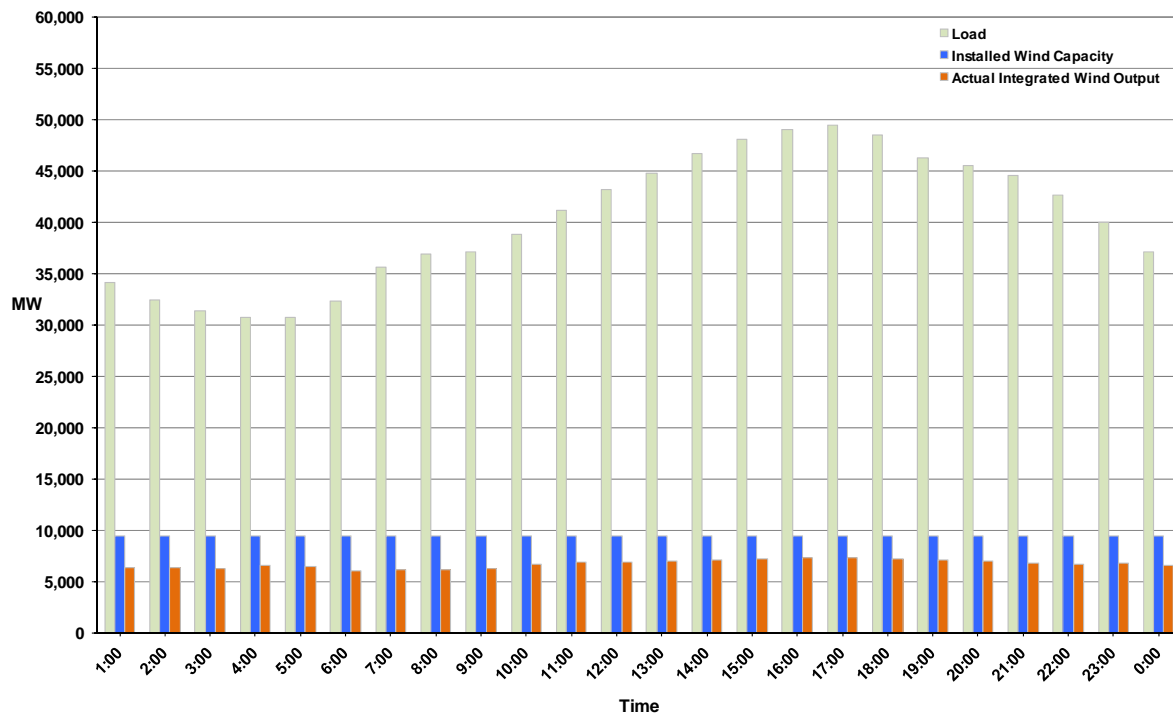




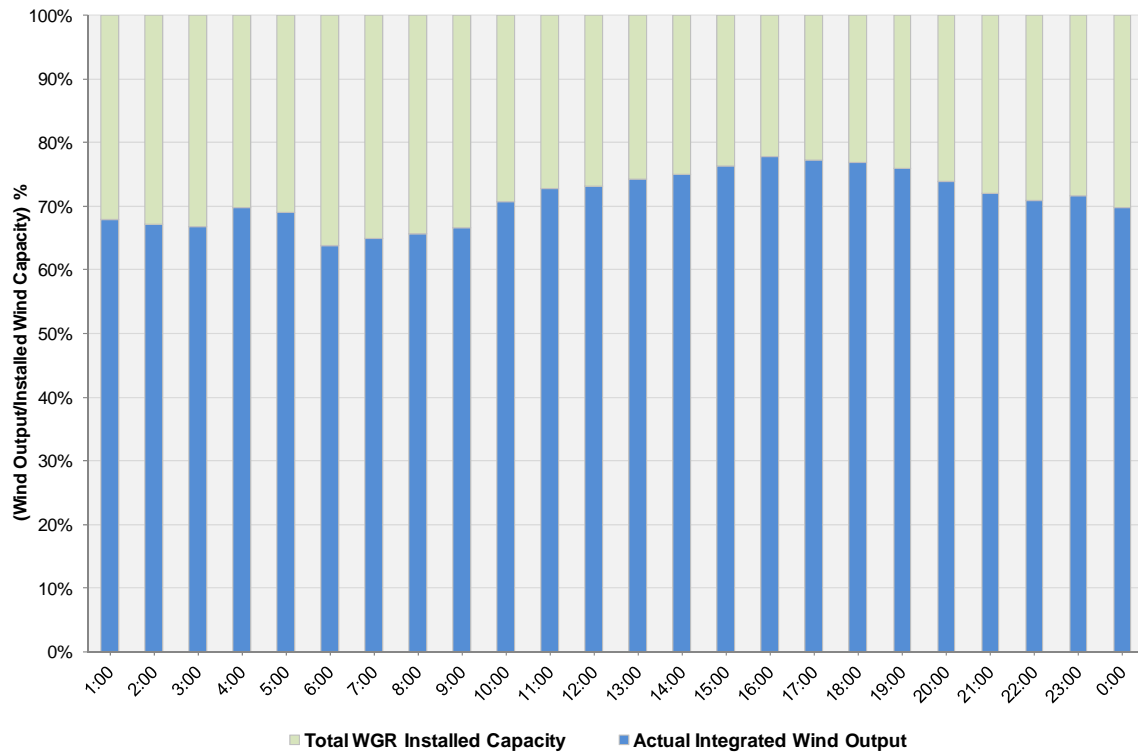
ERCOT Grid Operations Wind Integration Report: 10/07/11

Peak Load	49,452 MW
Load Peak Hour	17
Wind over Peak	7,288 MW
Wind Record 06/19/11	7,355 MW
Max Wind Value (New Record)	7,400 MW
Wind Peak Time	15:06:00
Wind Integration %	15.18%

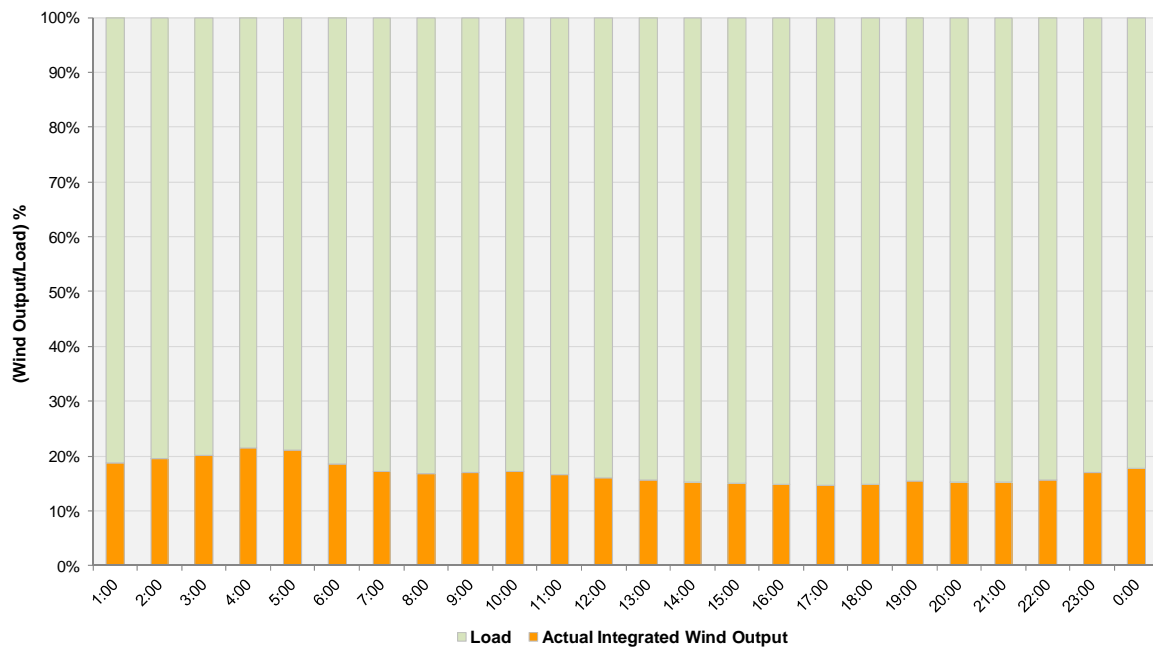
Hourly Average Actual Load vs. Actual Wind Output
10-07-2011



Actual Wind Output as a Percentage of the Total Installed Wind Capacity
10-07-2011



Actual Wind Output as a Percentage of the ERCOT Load
10-07-2011



ERCOT Load vs. Actual Wind Output 9/30/2011 - 10/7/2011

